



CARROLL ENERGY

Industrial Electrical Systems /
Design, Install & Maintain

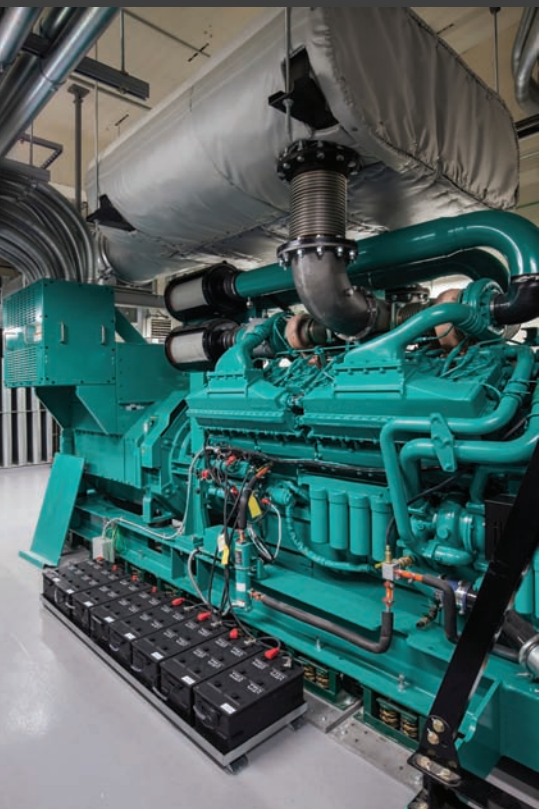
Capability Statement

About Carroll Energy

Carroll Energy is an electrical services business providing a range of electrical systems and services to the Energy, Resource and Industrial Sectors.

Carroll Energy is Australian owned and operates throughout Western Australia and the Northern Territory.

Carroll Energy was established in March 2023 by Lucas Carroll. Lucas brings over 15 years of high-quality experience and outstanding electrical and instrumentation skills.



Lucas Carroll, Electrical & Instrumentation Specialist

Lucas Carroll is highly regarded in his field and has proven ability to design, install, commission and maintain (including fault-finding) a broad range of industrial electrical systems and controls.

Lucas' Certifications:

- Western Australian Electrical Licence (Electrical & Business Nominee)
- Northern Territory Electrical Licence (Electrical & Business Nominee)
- WA Type B Class I Gas Fitter Permit
- Certificate IV in Instrumentation and control
- Certificate IV EEHA
- MTU ECU7 cert E3 Generation Diesel
- MTU ECU8 cert E3 Generation Diesel
- MTU ECU9 cert E3 Generation Diesel
- MTU GAS S1/L 400 MMCV7
- MTU GAS SL/1 4000 PHASE 4
- MTU GAS SL/2 4000 PHASE 4 V3
- Rolls Royce Power Systems BESS commissioning training
- Advanced training in COMAP generator controllers
- Bergen Engines trained
- Advanced Vega instrument trained
- Advanced WEG electric motor and drive trained

Lucas' notable experience includes:

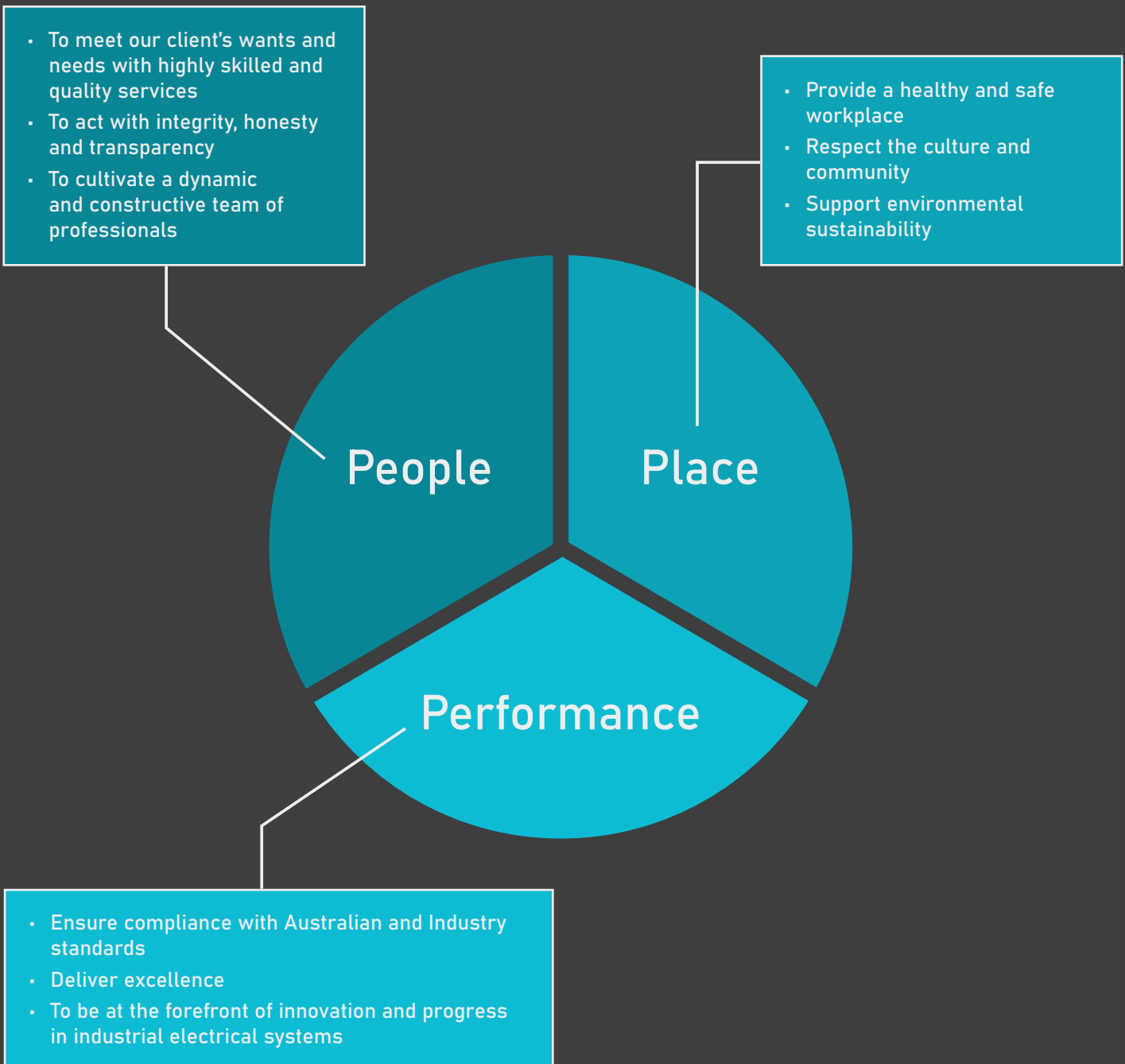
- Commissioning lead and handover of Onslow Power Station to Horizon power, 7 X 1MW MTU 12V4000 series gas gensets, 1 X MTU 16V2000 series black start diesel
- Penske commissioning lead for Waitsia stage 3 X 3.6MW MTU gas generators 2 X 1 MW MTU BESS
- Installation and commissioning lead for 185MW Bergen powered medium speed gas fired engines
- Installation and commissioning of 6 X 2.4MW MTU20V4000 diesel gensets into FMG Cloud Break Power Station
- Commissioning of 2 X 2.6MW MTU20V4000 diesel gensets for WaterCorp at Stirling Dam
- Design, install and commission 5 X 20V4000 MTU diesel generators for Groote Eylandt Mining Company
- Testing and maintenance for INPEX CPF and FPSO
- Technical support for Woodside, Wheatstone and Inpex platforms, technical support for Chevron Barrow Island
- Commissioning of GE LM6000 Gas Turbines
- Technical support and breakdowns for Rio Tinto, FMG, FQM, Zennith, Horizon Power, WaterCorp, Royal Australian Navy, Alinta, Gemco, WA Health, Roy Hill for MTU and Detroit products
- Installation and commissioning of 161 Vega radars for Redland City Shire (QLD) waste water pumping stations



Vision

To lead and support energy, industrial and mining business success through the design, installation and maintenance of electrical systems that are **smart, functional and reliable**.

Values



Core Capabilities & Services



Power Generation:
Prime and standby power stations
and power generating facilities



**Instrumentation and
Hazardous Areas**



Mining



General Industrial



Power Generation:
Prime and standby power stations and power generating facilities

Controls and automation

- ✓ Design, install and commission of new generator control systems
- ✓ Generator controller upgrade specialists
- ✓ Modbus mapping
- ✓ Control system upgrades

Type B Gas generators

- ✓ Licensed Type B gas fitters specialising in servicing and maintenance of high speed gas engines
- ✓ Type B gas train testing and maintenance
- ✓ Maintenance and troubleshooting of engine control systems and gas train apparatus
- ✓ Gas engine emissions tuning

Diesel generators

- ✓ High speed commissioning specialists
- ✓ Engine control system maintenance and troubleshooting
- ✓ HV and LV Alternator testing and fault finding
- ✓ AVR/ DVR tuning and upgrades

Battery storage systems

- ✓ Battery maintenance
- ✓ Inverter maintenance
- ✓ Breakdowns



Core Capabilities & Services cont.



Instrumentation and Hazardous Areas

Design

- ☑ Engineering studies
- ☑ Instrument selections

Install

- ☑ Installation of instruments to suit any application

Commissioning, Maintenance, Inspections and Reports

- ☑ Hazardous areas, mining, water and wastewater, power stations



Mining

Fixed plant maintenance and Commissioning

- ☑ Switchboard work, Variable speed drives, soft starters , power factor correction, process equipment, instrument calibrations. Experienced with crushing, grinding, leaching and clarification processes

Controls

- ☑ PLC and relay logic



General Industrial

Installation, commissioning and maintenance of:

- ☑ Water and Wastewater pumping and controls
- ☑ Single and 3 phase motors
- ☑ Motor starter controllers
- ☑ Variable speed drives
- ☑ Relay logic and PLC control

Clients and Associates

Carroll Energy is already building relationships and continues to seek work with:

- ☑ Energy providers and suppliers
- ☑ Government Bodies (e.g. hospitals, water and wastewater facilities)
- ☑ Mining and Oil & Gas Sectors
- ☑ Industrial Plant and Manufacturing

Carroll Energy is also able to collaborate and has developed relationships with other trusted and highly professional associates in engineering and mechanical fields.



Contact Us

Lucas Carroll
Electrical & Instrumentation
Specialist WA & NT

☎ 0458 714 108

✉ lucas@carrollenergy.au
www.carrollenergy.au

ABN 36 665 607 303
WA EC15627 & NT EC: C4428

